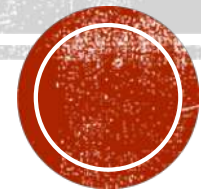
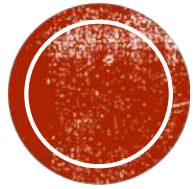


# RCPM PROJECT WITH THE OPS 2.0

December 11, 2020

Introductory Zoom session





# PROJECT SUMMARY PRESENTATION



# RCPÉM (REGROUPEMENT DES CENTRES DE LA PETITE ENFANCE DE LA MONTÉRÉGIE) OPS 2.0

## **Project title:**

*Creating Optimal  
Outdoor Spaces for  
Infants and Toddlers in  
Early Learning and Child  
Care Centers*



# INTENDED GOAL

- In order to ensure that children aged 0–2 in Early Learning and Child Care programs **enjoy spending time outdoors** where they can undertake their first **independent learning experiences**, the project encourages all Early Learning and Child Care **staff** to become **more attuned to the importance** of spending time outdoors and to **strengthen their educational practices** accordingly.
- Furthermore, the project seeks **to raise awareness among the parent clients** of Early Learning and Child Care centres about the **impacts of outdoor activities on the development of their children.**



# BRIEF DESCRIPTION OF WHAT THE PROJECT IS GOING TO DO

- *The project will allow us to set up three demonstration sites in \*Early Childhood centres, i.e. to test three distinct and specific spaces. We plan to set up outdoor living spaces that specifically target infants and toddlers, in the following contexts:*
  - *Revamping an existing playground for infants (0-2 years old)*
  - *Adding a new infants' playground to an existing \*facility*
  - *Setting up a playground in a brand-new facility*
- *The **education staff** at the three childcare facilities will be encouraged to **use the new care and play resources in the outdoor spaces**. They will be able to guide the infants and toddlers while using these naturally landscaped outdoor areas, which will offer the **children ample freedom of movement and exploration** while at the same time **allowing for appropriate comfort and care** at all times and in **all weather conditions**.*
- *This will provide an **opportunity for all stakeholders to witness** the possibilities for ensuring optimal well-being, health, and overall development in young children aged 0-2.*
- *It will also be an **opportunity to improve the working conditions of education staff by encouraging the use of outdoor spaces** on a regular basis and throughout the year.*

*\*In Québec, an Early Childhood centre (or “Centre de la petite enfance” or “CPE”) is a private non-profit organization (NPO) that provides educational childcare services in a single “facility” composed of between one and five buildings.*



**INTENDED GOAL** of the project known as *Creating Optimal Outdoor Spaces for Infants and Toddlers in Early Learning and Child Care*: In order to ensure that children aged 0–2 in daycare programs enjoy spending time outdoors where they can undertake their first independent learning experiences, the project encourages all daycare staff to become more attuned to the importance of spending time outdoors and to strengthen their educational practices accordingly.

Who does the project target?	Activities	Short-term outcomes	Medium-term outcomes	Long-term outcomes
<p><b>Contexts:</b> revamping existing playgrounds for infants, adding a new infants' playground to an existing facility, or construction of a brand-new facility.</p> <p>The education staff, the parents using the facility, and the management of the two daycare centres with pilot projects</p> <p>Landscape planning professionals</p> <p>The woodworking industry (Woodworks Working Group)</p> <p>Educational institutions that offer landscape planning programs</p> <p>The government department responsible for child and family welfare policies</p> <p><b>Other stakeholders</b></p> <p>Our Canada-wide network of childcare partners</p> <p>Directions of the Ministry of the Family</p> <p>Donor parties</p> <p>General public</p>	<p>Information and training activities. Elaborate awareness-building documents. Develop learning materials. Share knowledge/learning outcomes gained from similar projects.</p> <p>Awareness-building activities for use at conferences. Access to subject-specific training activities.</p> <p>Make available all the materials and equipment required to set up a playground for infants and toddlers.</p> <p>Targeted meetings with specific decision-makers. Elaborate a set of talking points to help build awareness of the importance of quality outdoor environments for young children. Mobilize donor funding with a focus on funding needs. Urge educational institutions to make available specialized courses on the subject.</p> <p>Disseminate and share evaluation data collected during the project (Project implementation and impact on children's overall development).</p>	<p>As they change their practices, staff members get a sense of being supported/feel that their guidance needs are being taken seriously. The parents using the facilities are kept informed about practice changes with regard to the use of the playground as an education space. Accelerated procedures for setting up playgrounds in accordance with young children's needs.</p> <p>Greater awareness among professional staff of the importance of making playgrounds more development-friendly for infants and toddlers.</p> <p>Canadian manufacturers of playground furniture produce sample models for testing and accreditation by the European Woodworks Working Group.</p> <p>Expanded interest among teachers to participate in pilot projects involving the adaptation of outdoor facilities to the needs of infants and toddlers. The Ministère de la Famille recognizes the material resources required for setting up an infants' playground that meets the overall development needs of children aged 0–2.</p> <p>Enhanced understanding of winning conditions when implementing practice changes and setting up outdoor spaces.</p>	<p>The staff members understand how to make use of the new equipment and provide guidance to the children in the new playground facility. Parents are made aware of the importance of spending time outdoors. The infants and toddlers make maximum use of the playgrounds in the two daycare centres with pilot projects.</p> <p>Landscape planning professionals' changed perspective and capacity to set up quality outdoor spaces in educational childcare centres for children aged 0–2.</p> <p>The pilot project environments include access to motor skills equipment and furniture.</p> <p>Emergence of landscape planning programs in educational institutions that specialize in the construction of outdoor playground spaces in educational childcare centres for children aged 0–2. The Ministère de la Famille gradually establishes budget allowances to help facilitate the implementation of outdoor spaces in line with the recommendations contained in the guide and in the project.</p> <p>Enhanced understanding of the effects of motor skills equipment and furniture, of the playground's layout, and of outdoor play activities and sleep on the well-being, health (fewer viral infections, strengthened immunity), and overall development of infants and toddlers.</p>	<p>The pilot project sites allow stakeholders to see what is possible.</p> <p>These demo sites integrate and/or establish connections between the practices and evaluation policies.</p> <p>Infants and toddlers enjoy enhanced well-being, health, and overall development.</p> <p>Improved working conditions for education staff.</p> <p>Increased numbers of educational childcare centres and landscape planning professionals prepared to commit themselves to a similar approach in full recognition of the added value it brings to infants' and toddlers' optimal development.</p> <p>Availability in Canada of motor skills-enhancing equipment and materials that are safe for and adapted to the needs of infants and toddlers.</p> <p>The Ministère de la Famille establishes permanent budget allowances so that educational childcare providers can set up certified outdoor spaces that support the overall development of infants and toddlers aged 0–2.</p>



**ULTIMATE GOAL:** To ensure that all children in Canada, beginning at birth and throughout their childhood, can experience optimal development by growing and evolving in outdoor environments that offer rich and varied opportunities for real-life experiences in all social environments (family, schools, organizations, early childhood education spaces, etc.).

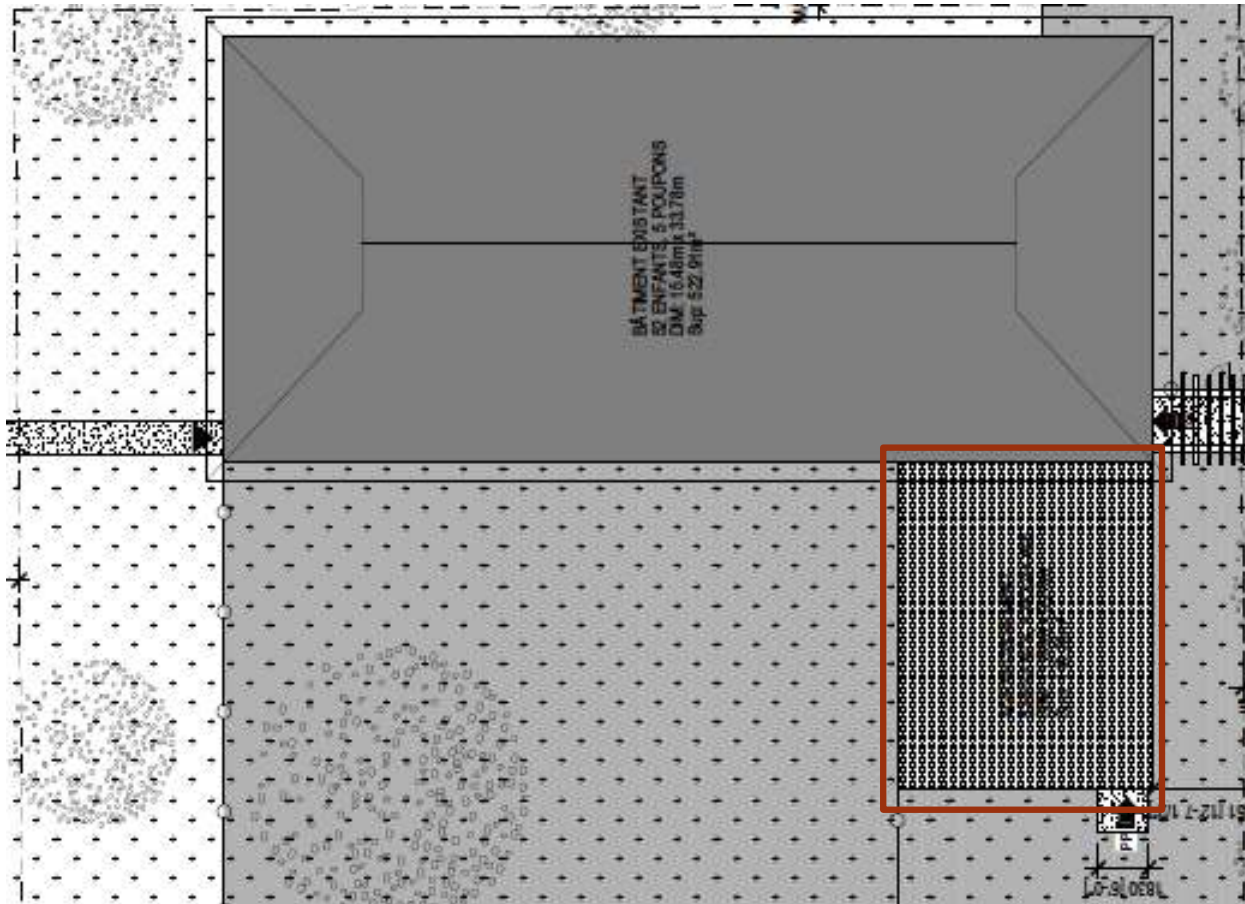




# COLLABORATORS CURRENTLY INVOLVED



DECEMBER 10, 2020, ALREADY A FIRST CHALLENGE TO OVERCOME

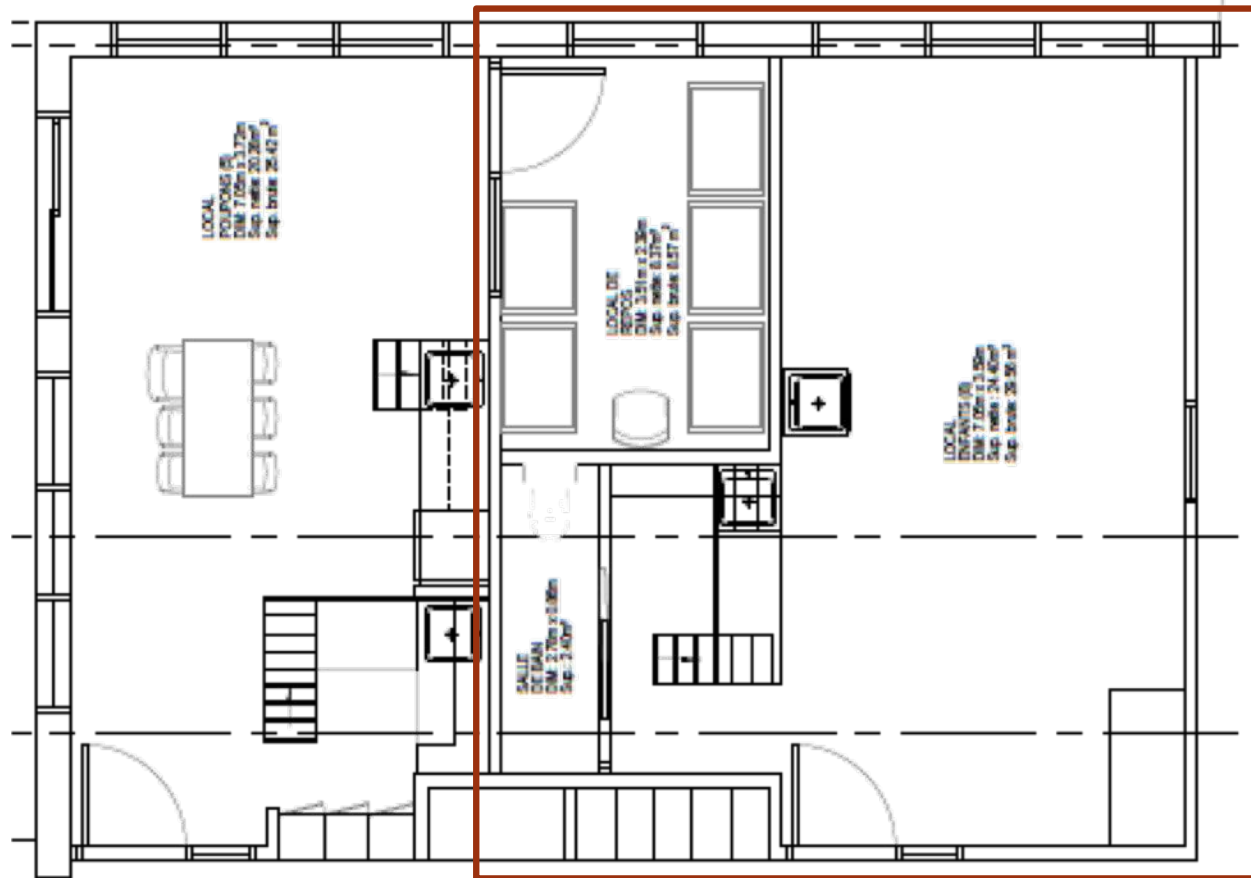


Architect's  
proposal for  
the building  
extension





DECEMBER 10, 2020, ALREADY A FIRST CHALLENGE TO OVERCOME



Architect's  
proposal for  
the building  
extension



# THE PLAYGROUND SEEN AS A PLACE :



to sleep



to eat



to play



to exercise

